



DUSD QUICK FACTS

A QUICK REFERENCE TO THE DUBLIN UNIFIED SCHOOL DISTRICT

DUSD | 7471 LARKDALE AVE. | DUBLIN, CA 94568-1500 | 925-828-2551 | WWW.DUBLINUSD.ORG

ABOUT DUBLIN

Dublin is a suburban city in the East (San Francisco) Bay Area and Tri-Valley regions of Alameda County, California. The city, with a population of approximately 63,600, is located along the north side of the Interstate 580/680 intersection.

HIGHLIGHTS

The Dublin Unified School District (DUSD) serves over 12,900 students, from preschool through adult education, in a diverse suburban environment. The district is comprised of seven elementary schools, two middle schools, one K-8 school, one continuation high school, and one comprehensive high school. The Dublin Unified School District mission is to educate every student to become a lifelong learner by providing a safe and supportive environment that fosters collective responsibility for each student's success.

The Dublin Unified School District was recently labeled one of the "Top 100 Best School Districts in California," ranking 27 out of over 750 state school districts, and fourth in Alameda county.¹

Dublin schools have been recognized with numerous accolades, including Advanced Placement Honor Roll, National Blue Ribbon School, Gold Ribbon Award, Project Lead The Way Distinguished School, California School of Character, National School of Character, Educational Results Partnership Honor Roll, California Distinguished School, and Title 1 Academic Achievement Award School.

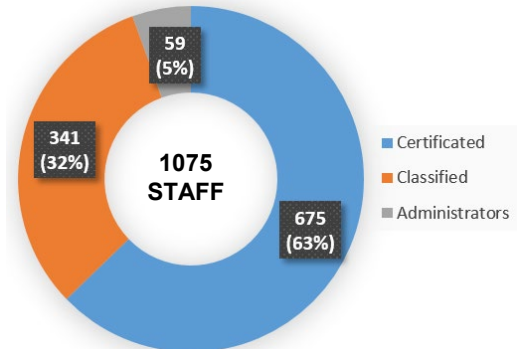
Dublin High School is renowned for its signature programs, including the Engineering Academy, which prepares students to succeed in a post-secondary engineering program; the Biomedical Academy, which prepares students for a post-secondary education in biomedical sciences; and the Culinary Academy which prepares students for a post-secondary education in the culinary arts.

SCHOOL TYPES

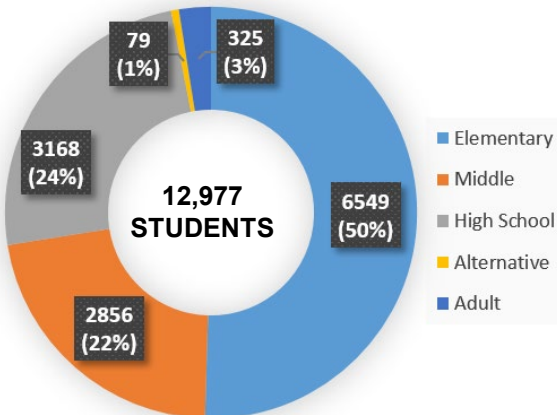


- Elementary: 7
- Middle: 2
- K-8: 1
- High School: 1
- Alternative: 1

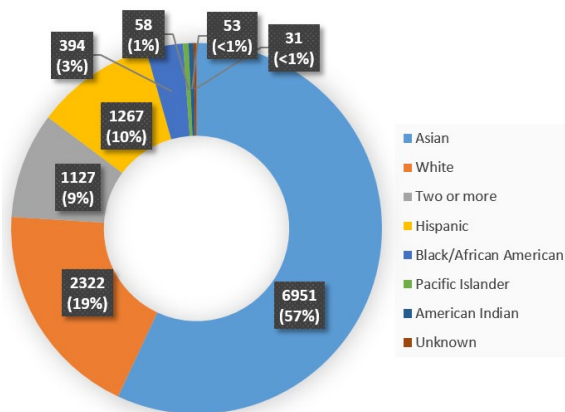
PERSONNEL



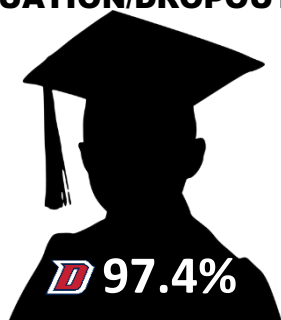
ENROLLMENT²



ETHNICITY^{2,3}



GRADUATION/DROPOUT RATE



AVERAGE DAILY ATTENDANCE⁴

ELEMENTARY	96.95%
MIDDLE	98.14%
HIGH	97.89%
ALTERNATIVE	82.16%



DUSD QUICK FACTS

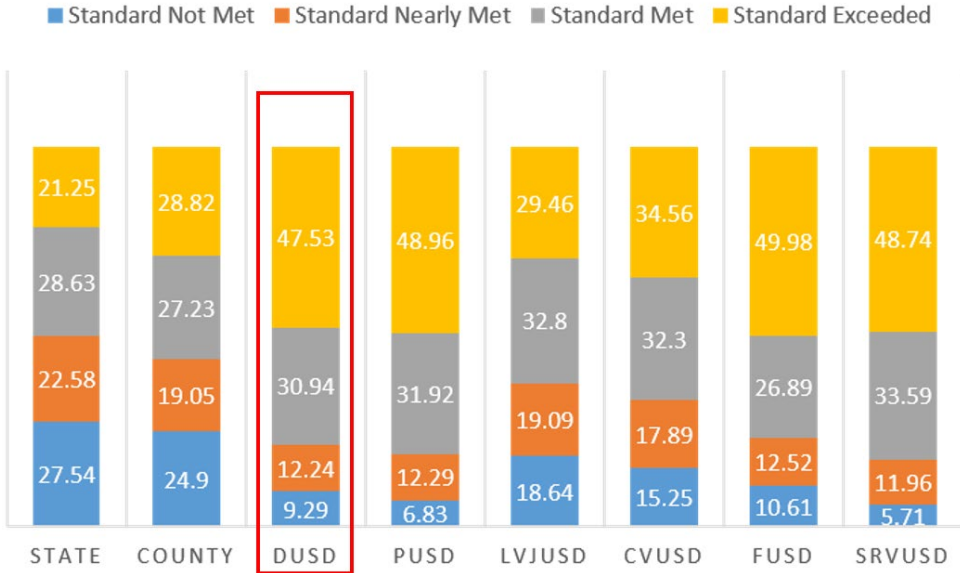
A QUICK REFERENCE TO THE DUBLIN UNIFIED SCHOOL DISTRICT

DUSD | 7471 LARKDALE AVE. | DUBLIN, CA 94568-1500 | 925-828-2551 | WWW.DUBLINUSD.ORG

2018 CAASPP ENGLISH LANGUAGE/LITERACY Percentage of students performing at level

78%

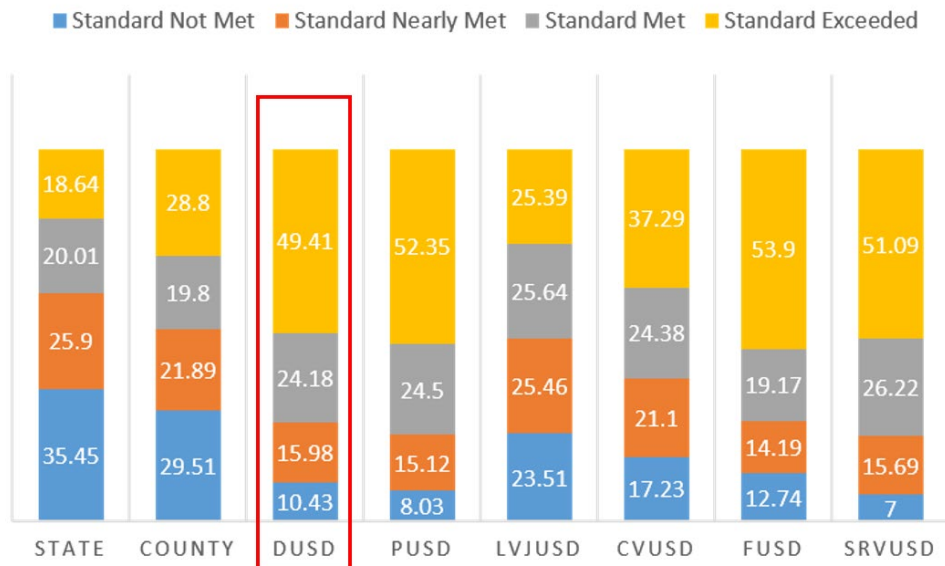
78% of DUSD Students Meet or Exceed English Standard



2018 CAASPP MATHEMATICS Percentage of students performing at level

73%

73% of DUSD Students Meet or Exceed Math Standard



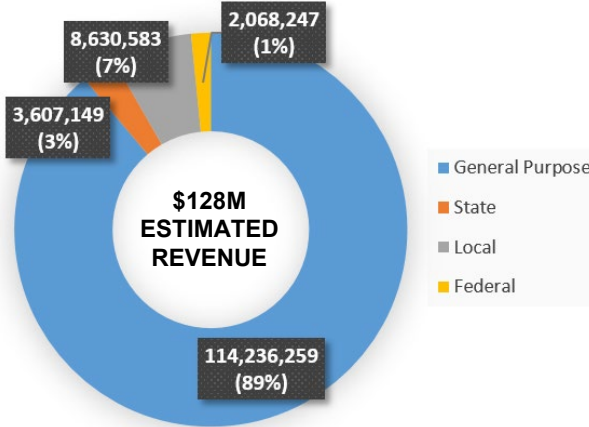


DUSD QUICK FACTS

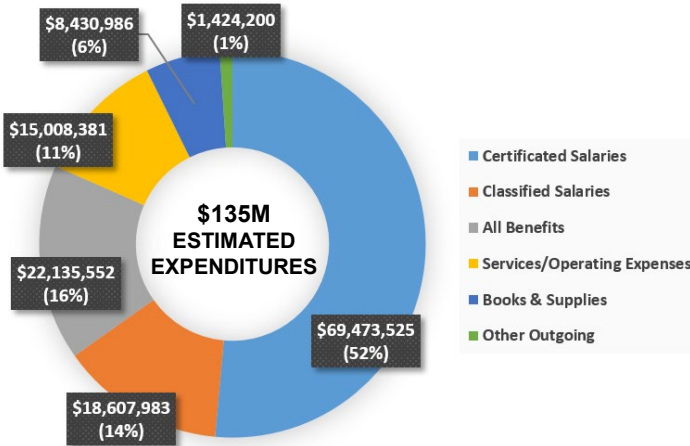
A QUICK REFERENCE TO THE DUBLIN UNIFIED SCHOOL DISTRICT

DUSD | 7471 LARKDALE AVE. | DUBLIN, CA 94568-1500 | 925-828-2551 | WWW.DUBLINUSD.ORG

REVENUE⁵



EXPENDITURES⁵



NUTRITION



- Breakfast Served: 102,738⁶
- Lunches Served: 486,933⁶
- Percent Receiving Free/Reduced Meals: 10%

TECHNOLOGY



- Devices Deployed in District: 12,500+
- WIFI Access Points: 600+
- Google Drive Files Created Annually: 2.4 Million

BOND MEASURES C, E & H

Through Bond Measures C & E, the Dublin Unified School District has invested over \$240 million in new sites, campus improvement, technology and other projects. Measure H funds have been allocated for the first phase of the future comprehensive high school, improvements to Murray and Frederiksen Elementary schools and other district projects.

ELEMENTARY SCHOOLS

- Amador Elementary
Holly Scroggins: 925-307-1950
- Dougherty Elementary
Joy Inouye-Scarpinato: 925-803-4444
- Dublin Elementary
Lauren McGovern: 925-833-1204
- Frederiksen Elementary
Claire Mognaga: 925-828-1037
- Green Elementary
Gary Grotke: 925-833-4200
- Kolb Elementary
Clara Lee: 925-551-4000
- Murray Elementary
Meghan Boriskin: 925-828-2568

K-8

- Cottonwood Creek
Lorianne Ventura: 925-833-3333

MIDDLE SCHOOLS

- Fallon Middle School
Risha Krishna: 925-875-9376
- Wells Middle School
Robert Slauson: 925-828-6227

HIGH SCHOOLS

- Dublin High
Maureen Byrne: 925-833-3300
- Valley High
Mario Hurtado: 925-829-4322

DUSD LEADERSHIP

Board of Trustees

- Dan Cherrier, President
- Megan Rouse, Vice President
- Amy Miller
- Gabrielle Blackman
- Catherine Kuo
- Tinni Mukherjee, Student Rep. DHS
- Sowri Athi, Student Rep. VHS

Superintendent & Cabinet

- Dr. Dave Marken, Superintendent
- Joe Sorra, Associate Superintendent, Business Services
- Diane Manske, Interim Asst. Superintendent, Human Resources
- Dr. Matt Campbell, Asst. Superintendent, Educational Services

1. <http://bit.ly/DUSD-Niche-19>

2. 19-20 DUSD enrollment records

3. Adult education students not factored into Ethnicity statistics

4. DUSD Fiscal Year 2019-2020 Year-to-date attendance through November 2019

5. 19-20 Estimated Actuals from 19-20 Annual Budget (6/25)

6. 2018-2019 Actuals