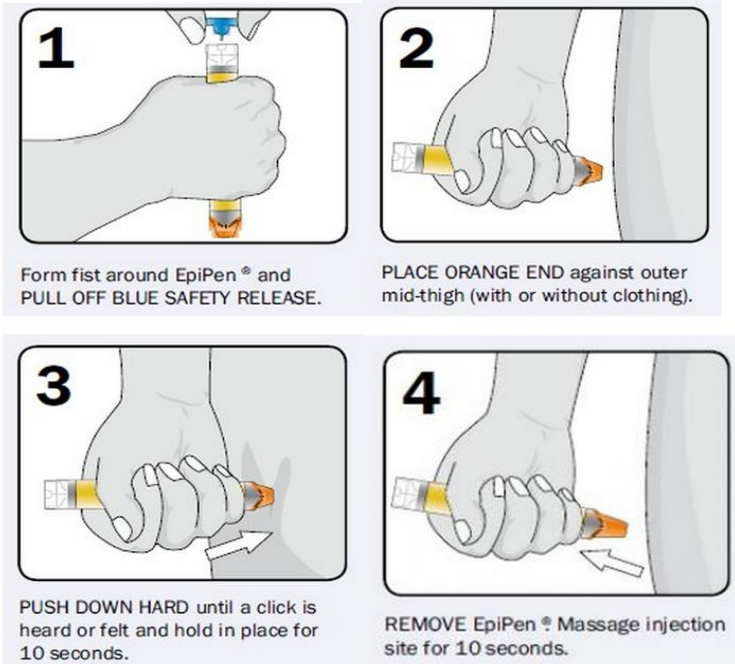


HOW AND WHEN TO USE AN EPIPEN

How do I use the EpiPen®?

There are 4 steps.



WHEN TO USE AN EPIPEN





FOR ANY OF THE FOLLOWING

SEVERE SYMPTOMS

-  **LUNG:** Short of breath, wheezing, repetitive cough
-  **HEART:** Pale, blue, faint, weak pulse, dizzy
-  **THROAT:** Tight, hoarse, trouble breathing/swallowing
-  **MOUTH:** Significant swelling of the tongue and/or lips
-  **SKIN:** Many hives over body, widespread redness
-  **GUT:** Repetitive vomiting or severe diarrhea
-  **OTHER:** Feeling something bad is about to happen, anxiety, confusion

OR MORE THAN ONE

MILD SYMPTOM

-  **NOSE:** Itchy/runny nose, sneezing
-  **MOUTH:** Itchy mouth
-  **SKIN:** A few hives, mild itch
-  **GUT:** Mild nausea/discomfort

- ↓ ↓ ↓
1. **INJECT EPINEPHRINE IMMEDIATELY.**
 2. **Call 911.** Request ambulance with epinephrine.

Do not depend on antihistamines. When in doubt, give epinephrine and call 911.